



model **6455**
Waste Strainer

FEATURES & BENEFITS

OPTIONS

To see all options for this model, visit www.hawesco.com

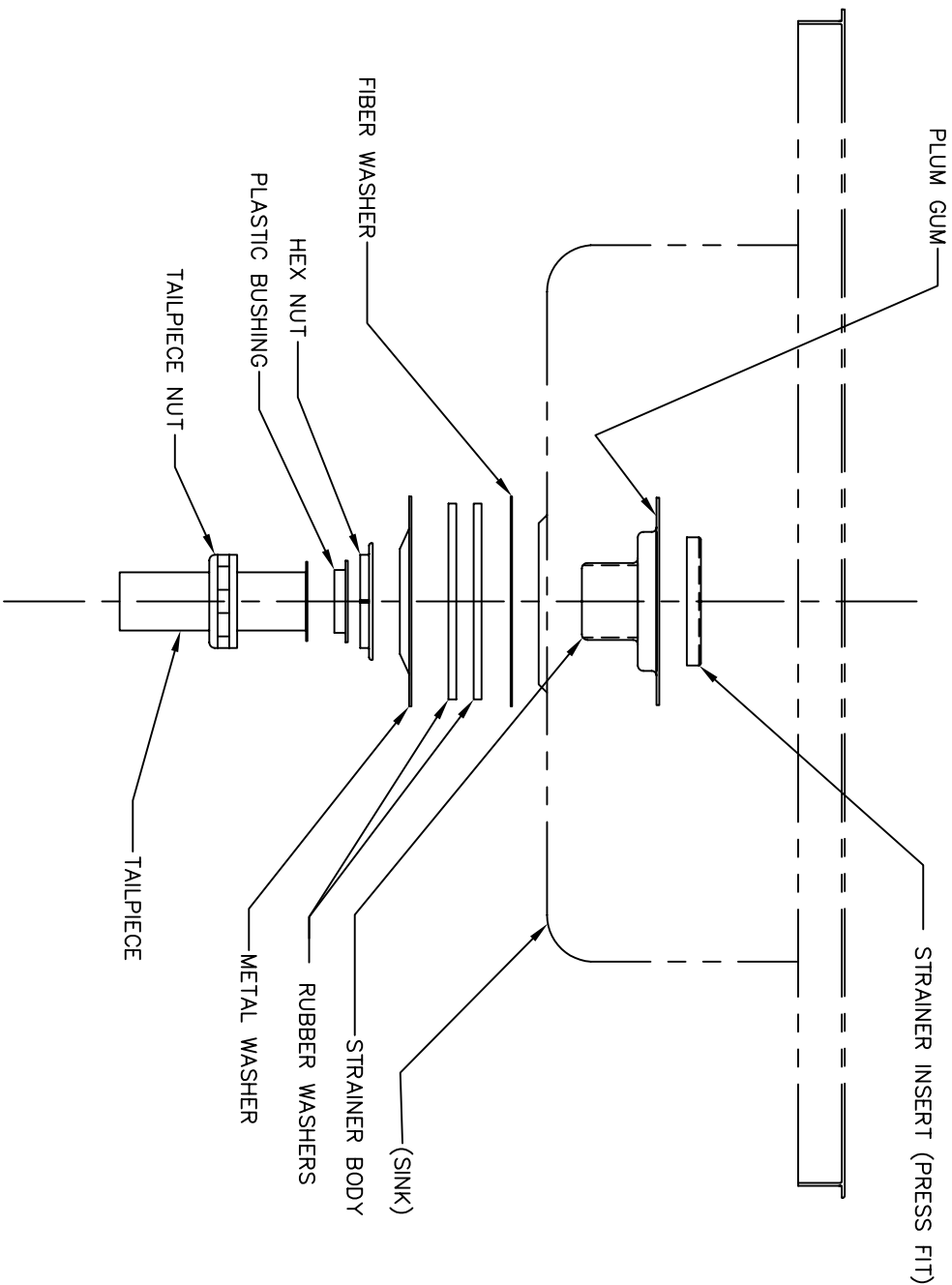


SPECIFICATIONS

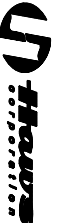
Model 6455 is a polished chrome-plated brass flat waste strainer with grid, washer locknut and slip joint tailpiece. Flange diameter 4-1/2" (11.4 cm) fits 3-1/2" to 4" (8.9 to 10.2 cm) drain holes; 1/1-2" O.D. (3.8) slip joint tailpiece is 4" (10.2 cm) long.

APPLICATIONS





- NOTES:
1. INSERT STRAINER BODY AS SHOWN, APPLY PLUM GUM TO INDICATED SURFACE AS REQUIRED
 2. INSERT FIBER, TWO RUBBER AND METAL WASHERS AS SHOWN, TIGHTEN HEX NUT TO MAKE A SECURE JOINT
 3. INSERT PLASTIC BUSHING IN END OF TAILPIECE AS SHOWN, SLIDE TAILPIECE NUT IN POSITION AS SHOWN AND TIGHTEN

		INFO FAX : 1-888-FAX-HANS (1-888-339-4297) 1465 Knappe Ln. Stony Brook, NY 11790 Phone: 775-359-4712 Fax: 775-359-7424 Haws Ag Building 3 CH-3401 Burgdorf Switzerland Haws Mfg Pte Ltd 74 Sungai Kadut, Loop Singapore 729531 e-mail: haws@hansco.com website: www.hansco.com	
TITLE: STRAINER MODEL: 62530 NO. OF PAGES: 1 DATE: 8/2/93	DRAWN BY: [blank] CHECKED BY: [blank] APPROVED BY: [blank]	DATE: [blank]	SHEET NO. 1 OF 1